

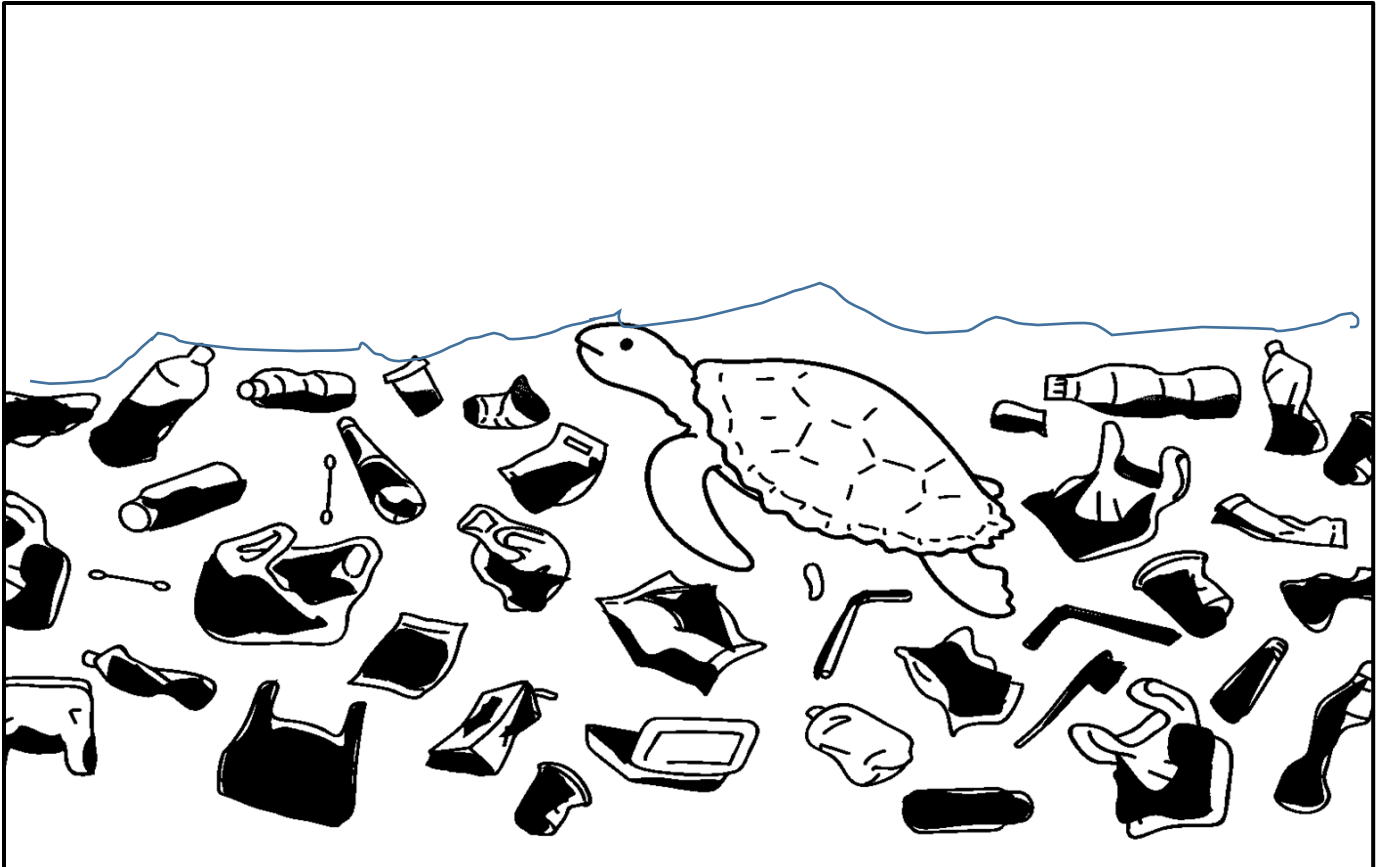
Name _____

Air Pollution



Directions:

1. Color ocean blue.
2. Color the turtle.



Pollution means something is dirty.



Directions:

1. Cut out the volcanoes.
2. Glue the volcanoes on the moon.



Air pollution is dirty air.



Directions:

1. Color the car.
2. Color the exhaust from the car gray.



Exhausts from cars makes the air dirty.



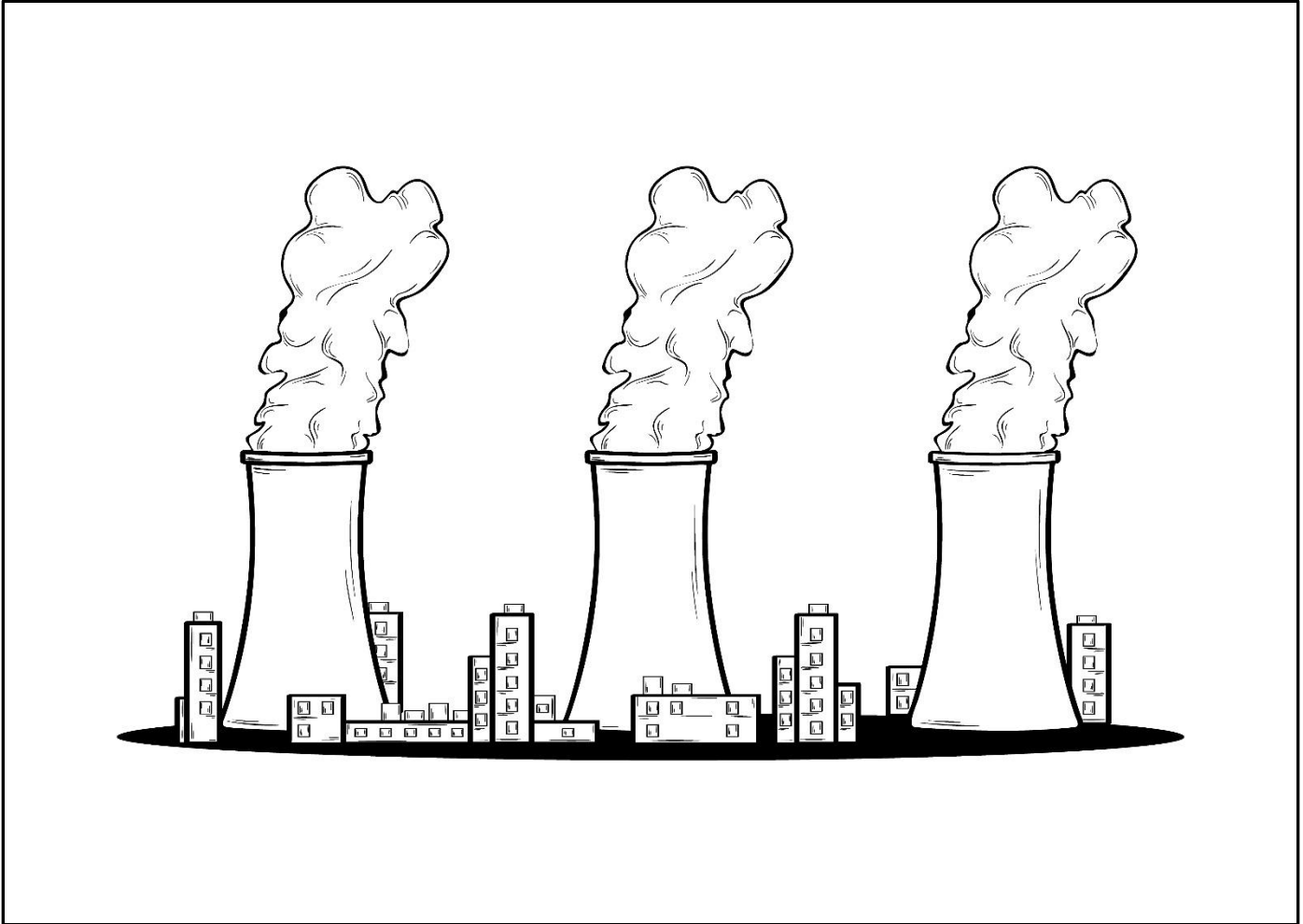
Directions: Color the exhaust from the airplane gray.



Exhaust from airplanes makes the air dirty.



Directions: Color the smoke from the factories gray.

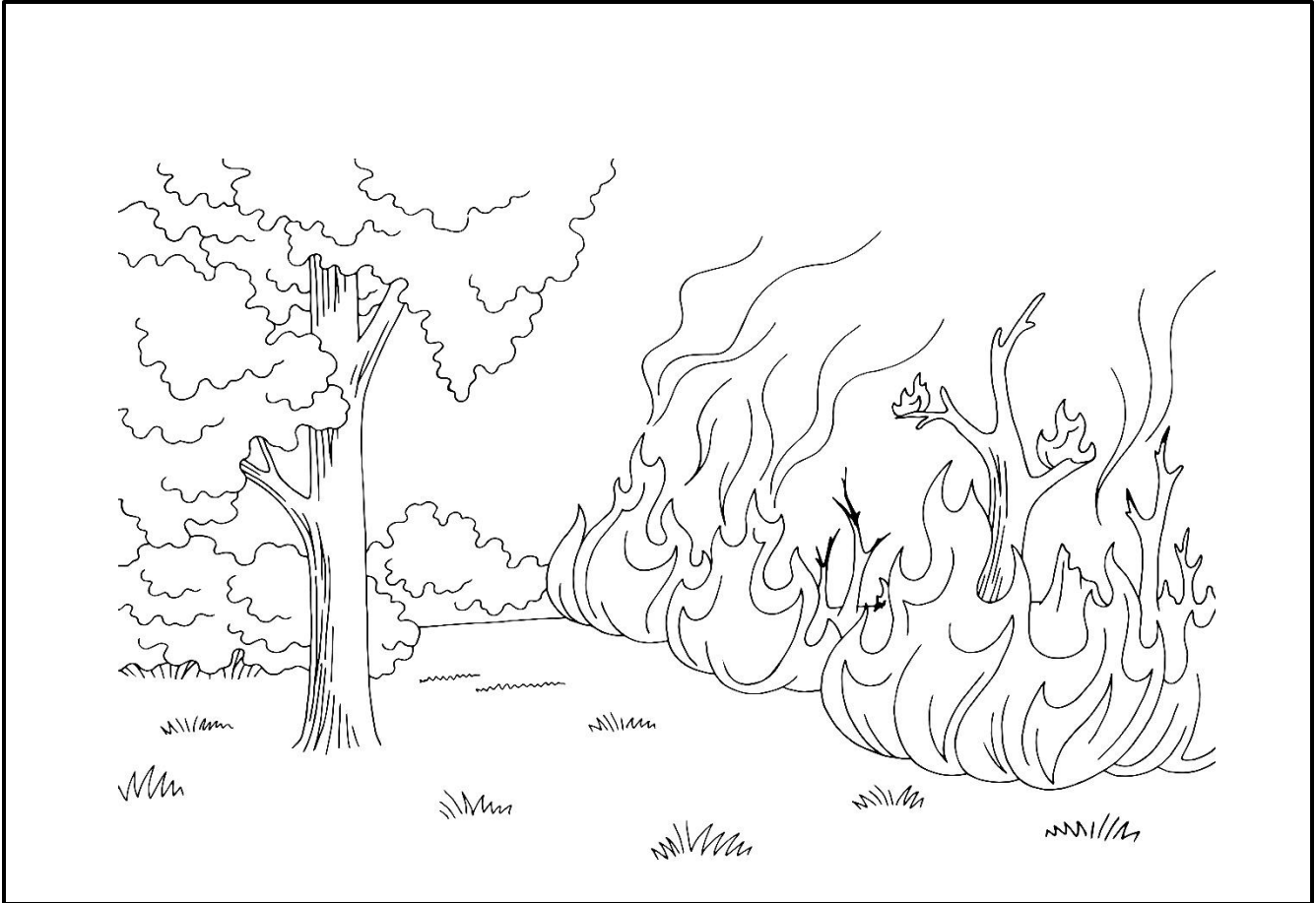


Smoke from **factories** makes the air dirty.



Directions:

1. Color the fire red.
2. Cut out the smoke on the last page.
3. Color the smoke gray.
4. Glue the smoke inside the picture.



Smoke from forest fires makes the air dirty.



Directions:

1. Color the picture.
2. Cut out the dust from the last page.
3. Glue dust onto the picture.



Dust from windstorms makes the air dirty.



Directions:

1. Color the people.
2. Cut out the air pollution on the last page.
3. Glue onto the picture

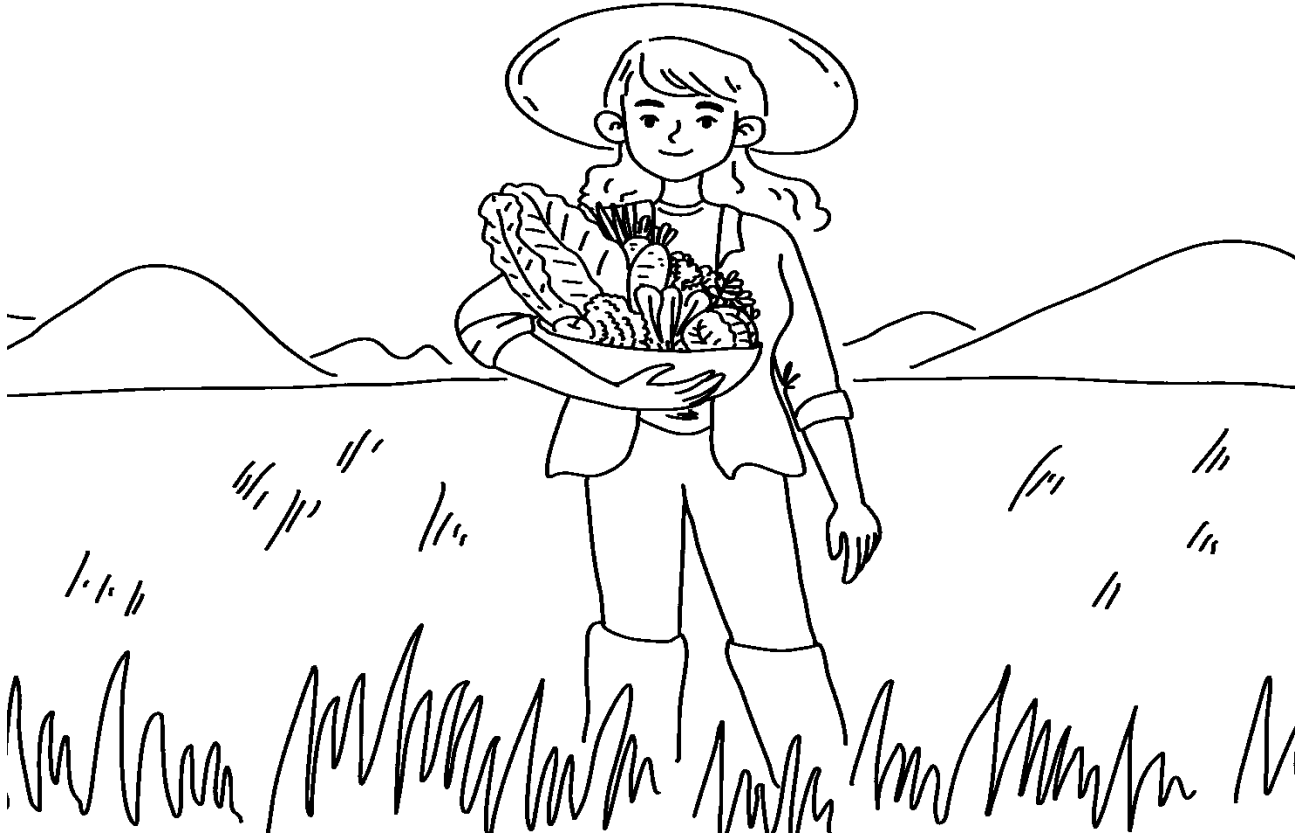


Air pollution is bad. It is not healthy to **breathe** dirty air.



Directions:

1. Color the picture of the farmer.



People, animals, and plants need clean air to live.



pollution

air pollution

cars

airplanes

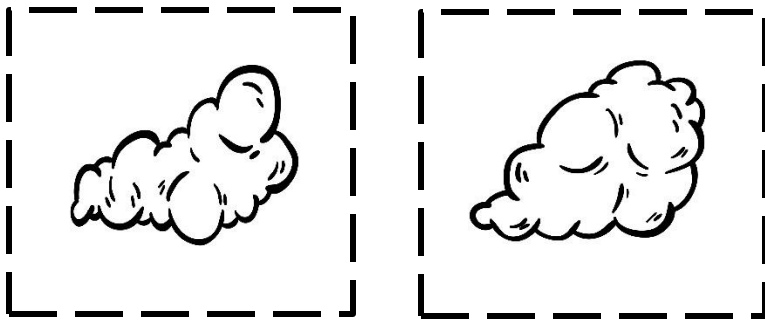
factories

forest fires

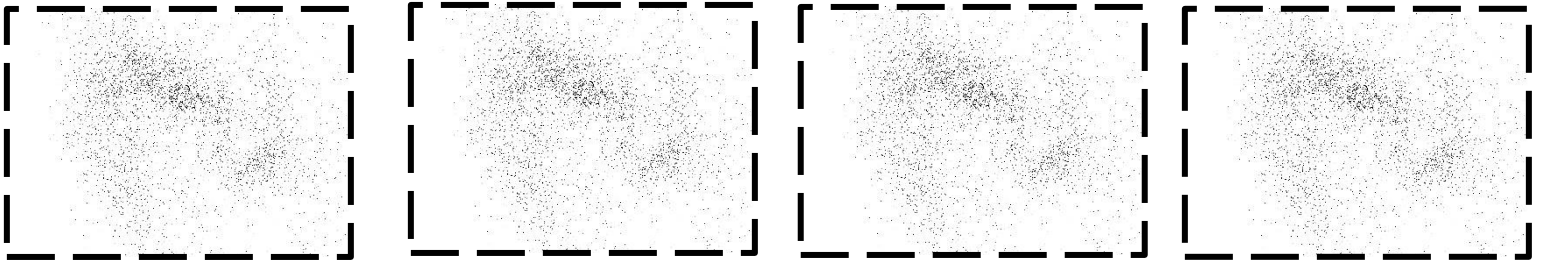
windstorms

breathe

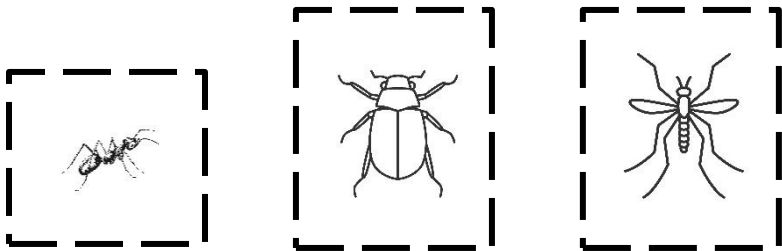
clean air



Page 6



Page 7



Page 3
