



Science

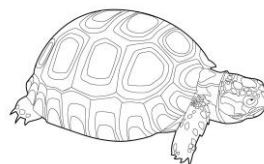
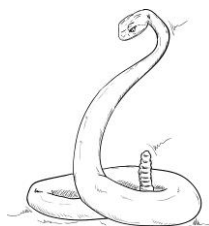
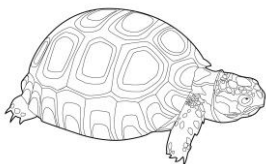
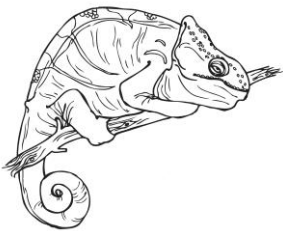
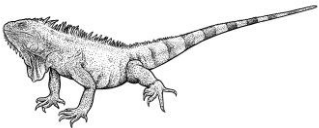
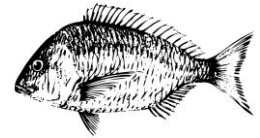
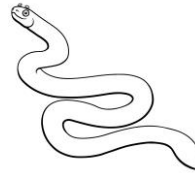
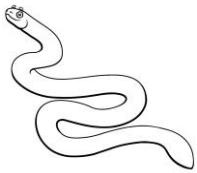
# Reptiles

## Printable Worksheet Booklet



Name \_\_\_\_\_

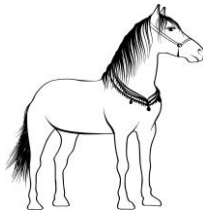
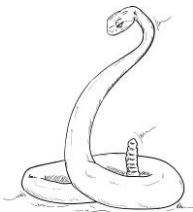
Directions: Circle the reptile that matches the first picture of a reptile in the row.



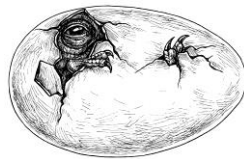
Name \_\_\_\_\_

Directions: Circle the picture of the correct answer.

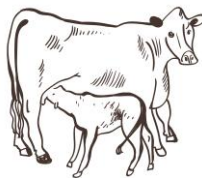
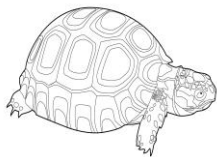
1. Which is a reptile?



2. Where do baby reptiles grow?



3. Which is a reptile?



4. Are reptiles cold or warm blooded?



cold



warm

Name \_\_\_\_\_

**Directions:** Use the word bank to pick out the 5 characteristics of reptiles.

warm blooded

grows in an egg

babies don't need help

cold blooded

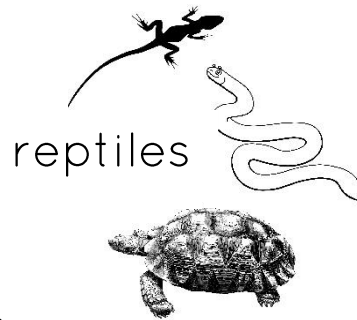
grows in mother

babies need help

scales on skin

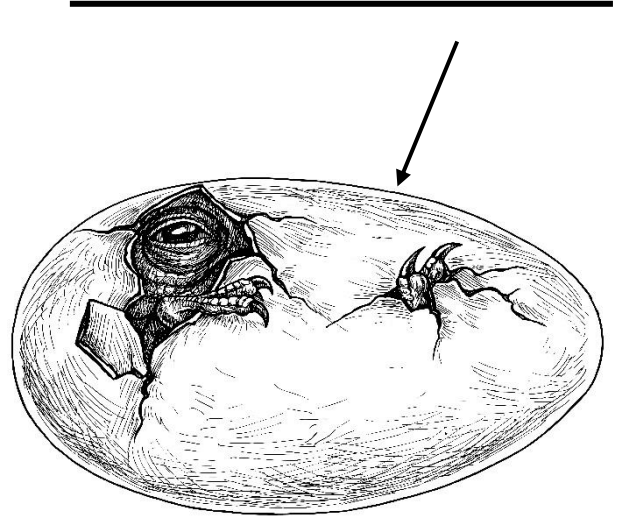
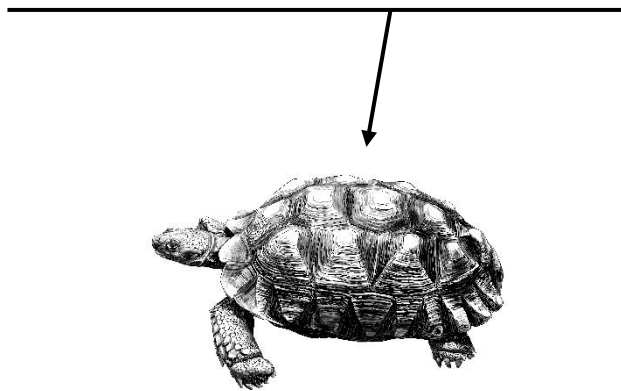
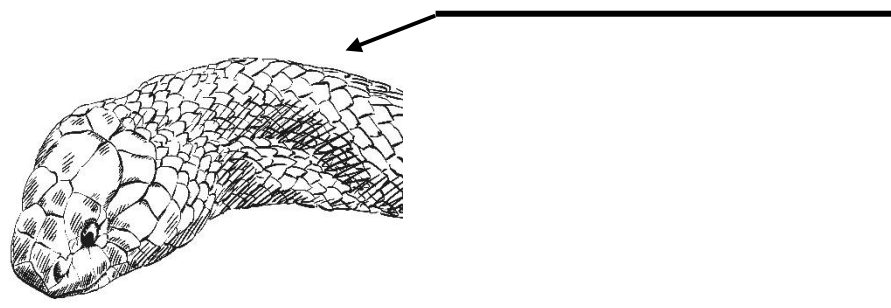
hair or fur

shells on skin



Name \_\_\_\_\_

Directions: Label 3 characteristics of reptiles by using the words at the bottom of the page. You can write your answers or cut and glue the words.



grows inside  
mother

scales

shells

hair or fur

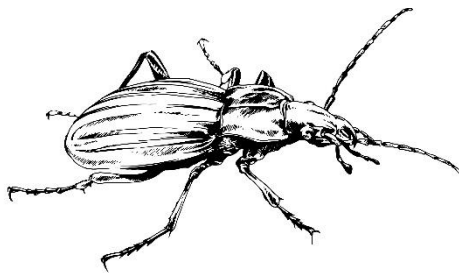
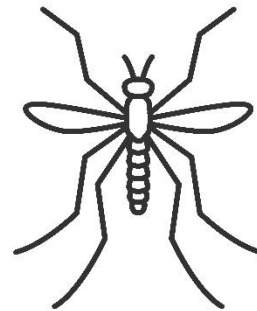
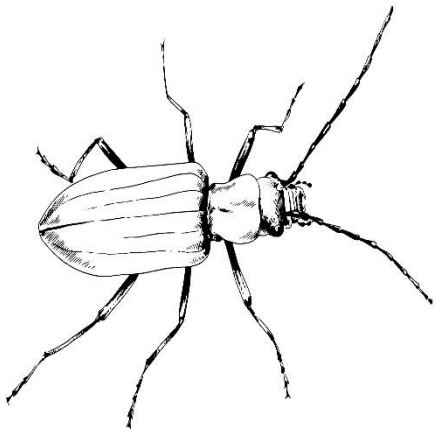
grows inside  
an egg

Name \_\_\_\_\_

**Fact:** Baby reptiles eat what adult reptiles eat. Many reptiles like to eat insects.

**Directions:**

1. Some baby reptiles eat \_\_\_\_\_.
2. Color the insects. Reptiles like to eat insects.
3. Trace and write the word **eat**.



eat

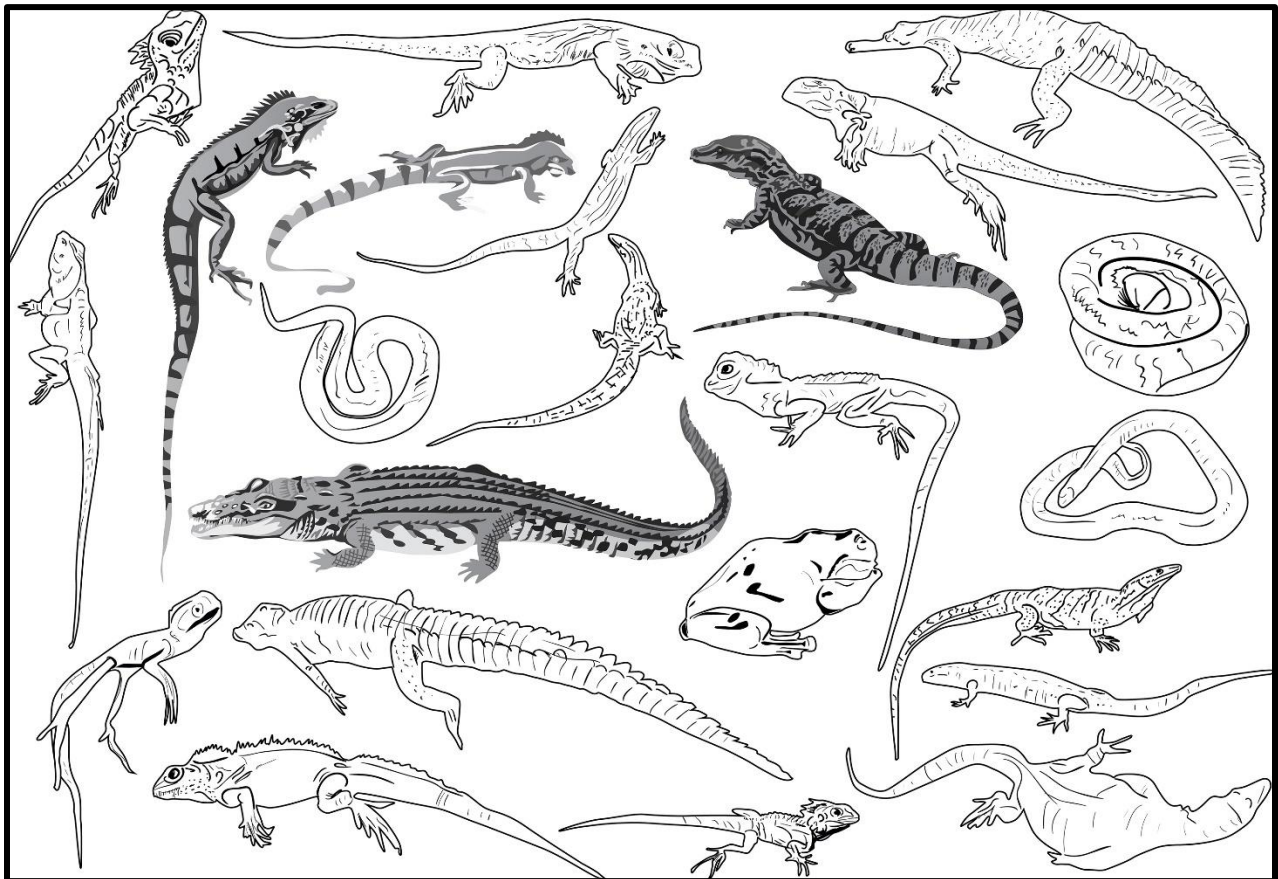
\_\_\_\_\_

Name \_\_\_\_\_

**Fact:** Reptiles have special **skin**. They do not have hair. Some reptiles are smooth. Some have **scales**.

Directions:

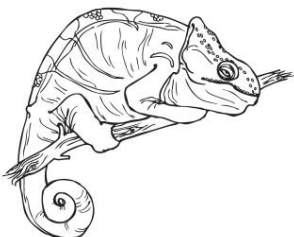
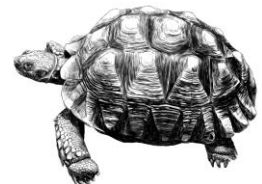
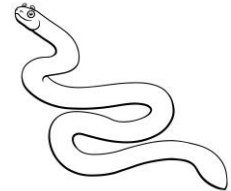
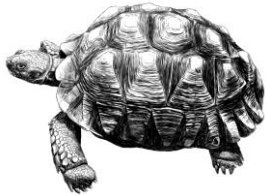
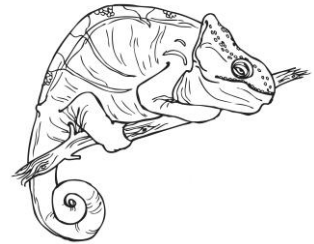
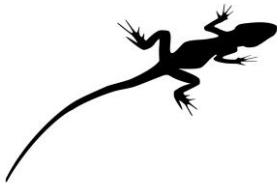
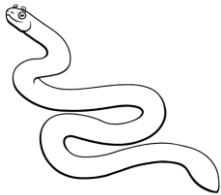
1. Reptiles have special \_\_\_\_\_.
2. Some have \_\_\_\_\_.
3. Color the pictures of reptiles.
4. Trace and write the word **skin**



skin \_\_\_\_\_

Name \_\_\_\_\_

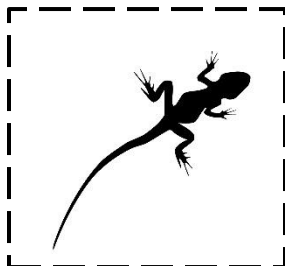
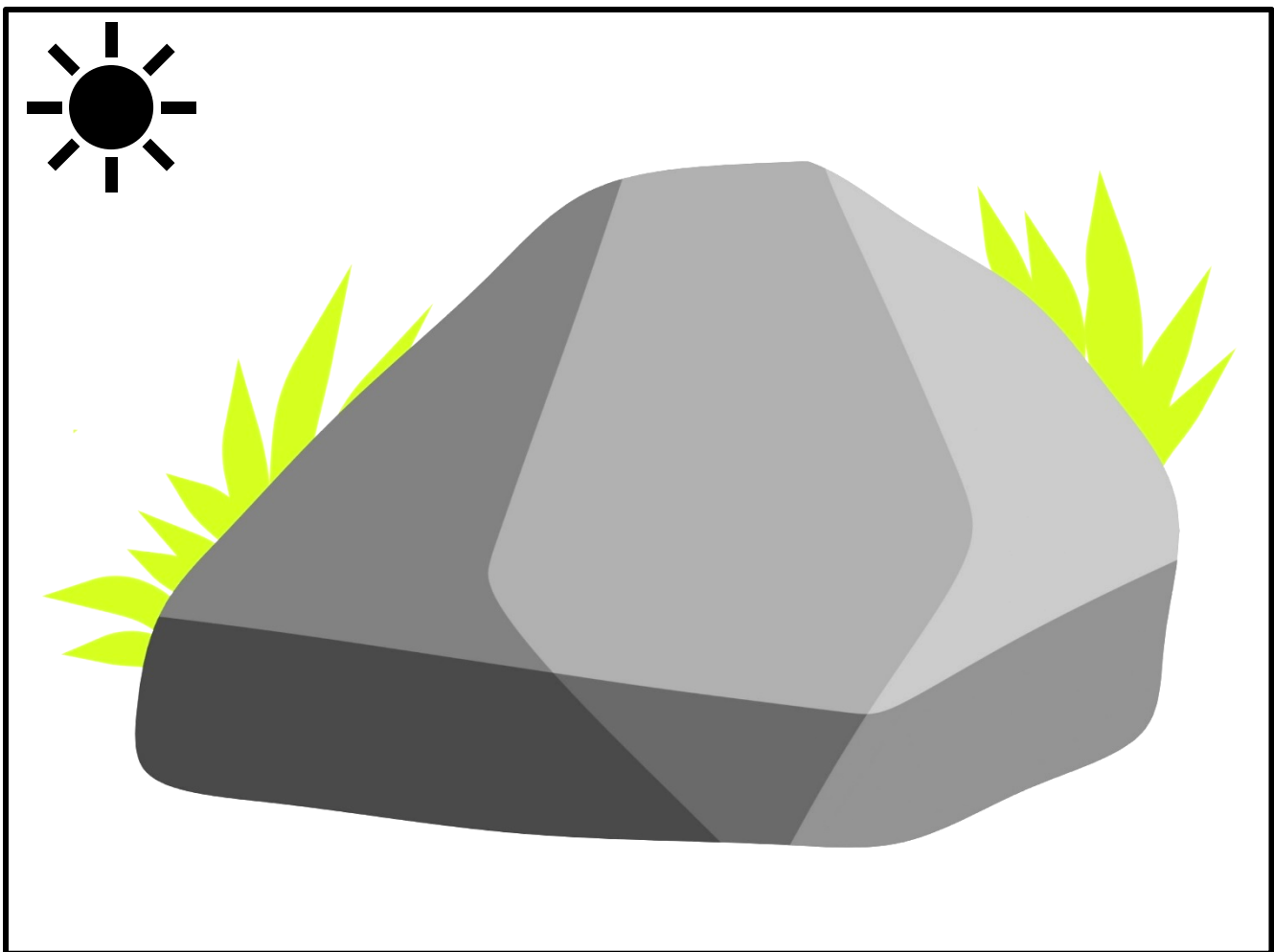
**Directions:** Draw a line from each reptile to the matching reptile.



Name \_\_\_\_\_

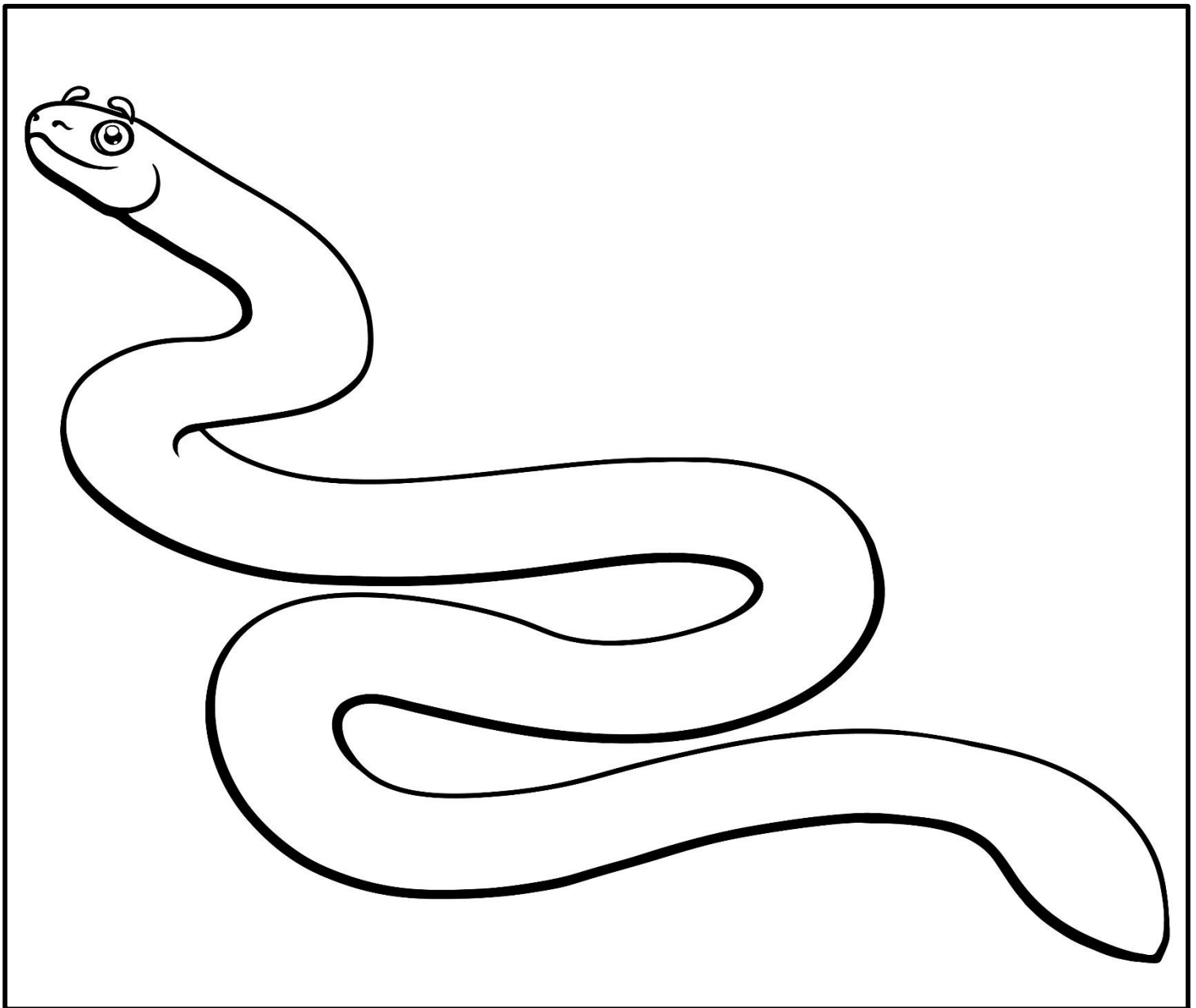
**Fact:** Reptiles are cold blooded. Some reptiles lay in the sun to warm up the inside of their bodies.

**Directions:** Cut out the picture of the reptile. Glue the reptile on the rock.



Name \_\_\_\_\_

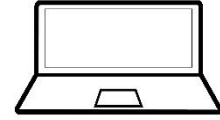
Directions: Glue sequins onto the snake and feel the texture of a snake.



Name \_\_\_\_\_

Directions:

1. Go to "search image".
2. Type in each word card.
3. Find a picture that you like. (talk about pictures you find)



Optional:

1. Save and upload to a PowerPoint or Word document.
2. Type a word or sentence about each picture.

reptile

reptile shells

reptile eggs

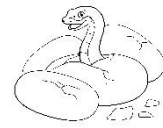
reptile scales

baby reptile

reptile in sun

Name \_\_\_\_\_

Directions: Trace over the words.

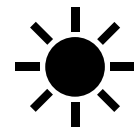


Reptiles hatch from eggs.

Some reptiles have shells.



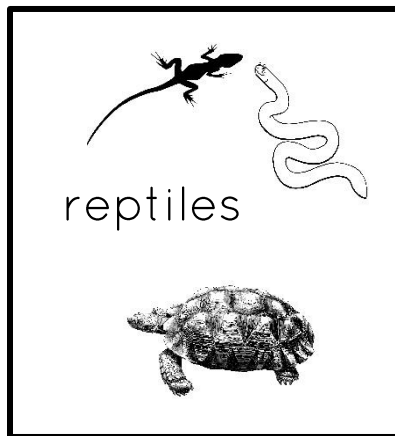
reptiles have scales.



Reptiles sit in the sun.

Name \_\_\_\_\_

Directions: Use your graphic organizer to write sentences.



Reptiles hatch from \_\_\_\_\_.

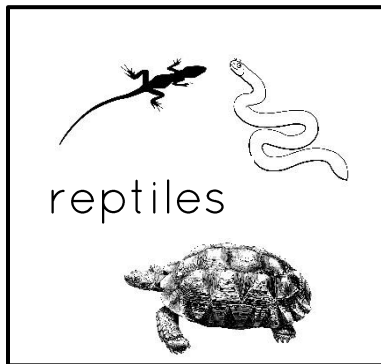
Baby reptiles don't need \_\_\_\_\_.

Some reptiles have \_\_\_\_\_.

Some reptiles have \_\_\_\_\_.

Name \_\_\_\_\_

Directions: Use your graphic organizer to write sentences.



1. \_\_\_\_\_
2. \_\_\_\_\_
3. \_\_\_\_\_
4. \_\_\_\_\_



Name \_\_\_\_\_

**Directions:** Use the words in the **Word Bank** to fill in the blank.

|        |       |      |
|--------|-------|------|
| scales | sun   | eggs |
| cold   | shell |      |

1. Reptiles lay \_\_\_\_\_ . (Page 2)

2. Some reptiles have \_\_\_\_\_ . (Page 5)

3. Some reptiles have a \_\_\_\_\_ . (Page 6)

4. Reptiles are \_\_\_\_\_ blooded. (Page 7)

5. Reptiles lay in the \_\_\_\_\_ to warm up. (Page 8)

Name \_\_\_\_\_

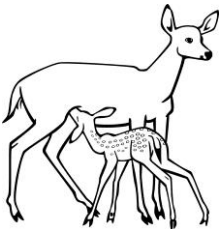
Directions: Answer Yes or No to the following questions.



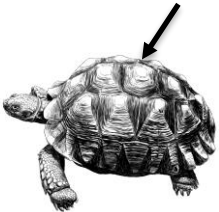
Do baby reptiles need their mother? \_\_\_\_\_



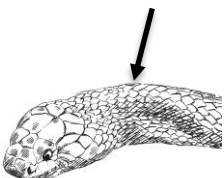
Do baby reptiles hatch from eggs? \_\_\_\_\_



Do reptiles drink milk? \_\_\_\_\_



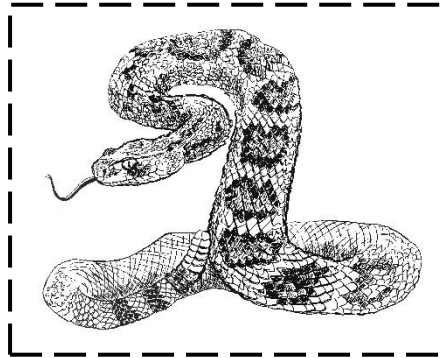
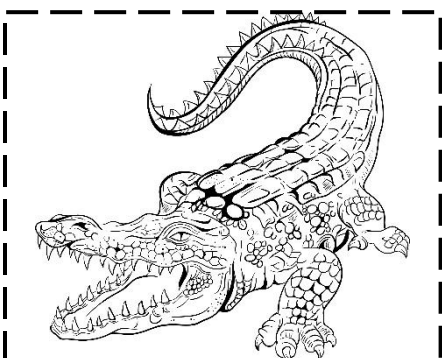
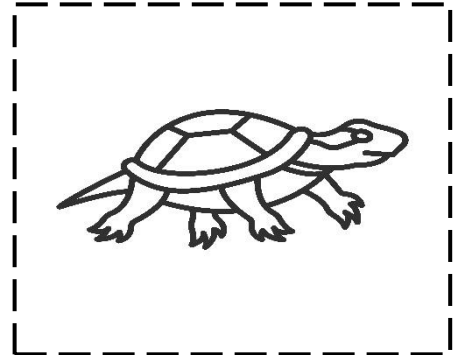
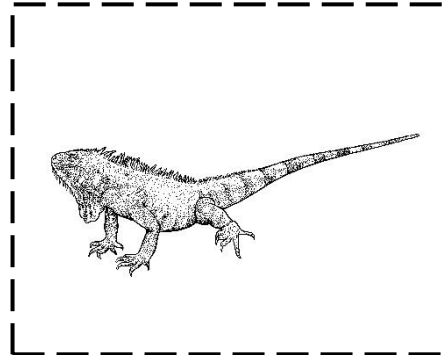
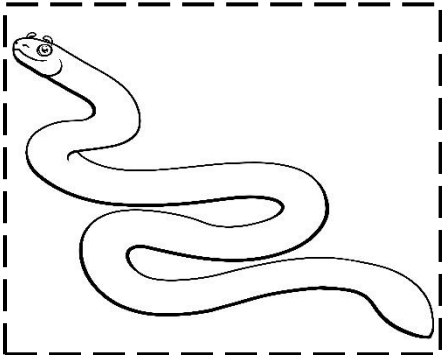
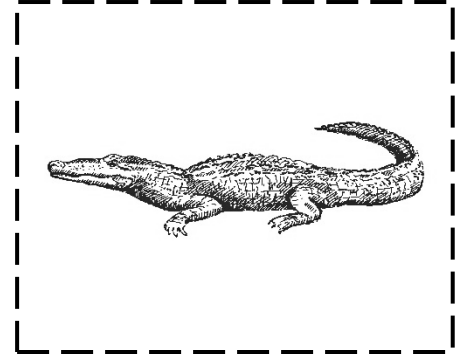
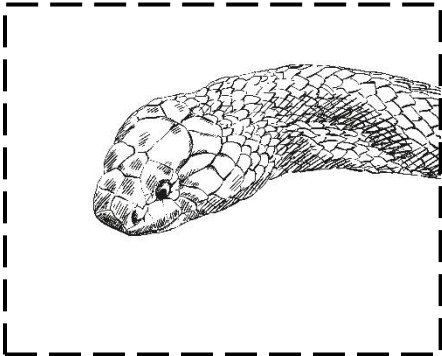
Do some reptiles have shells? \_\_\_\_\_

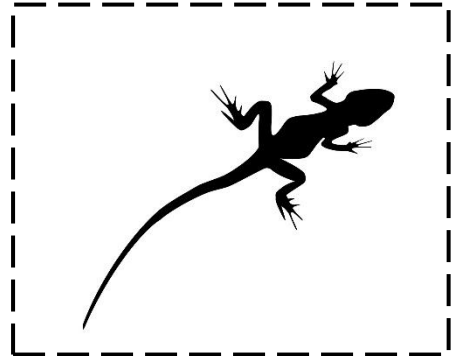
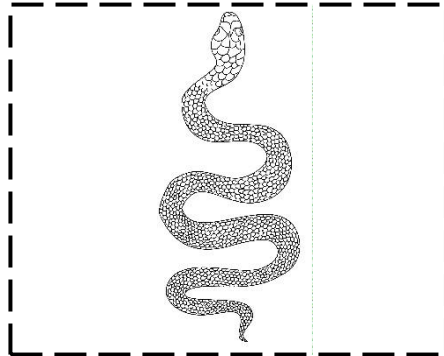
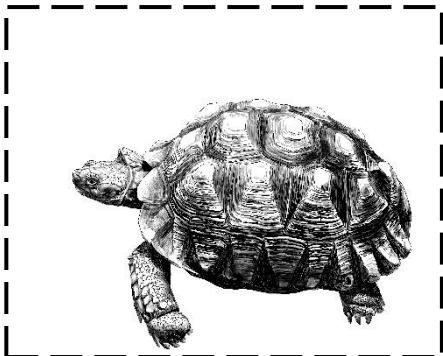
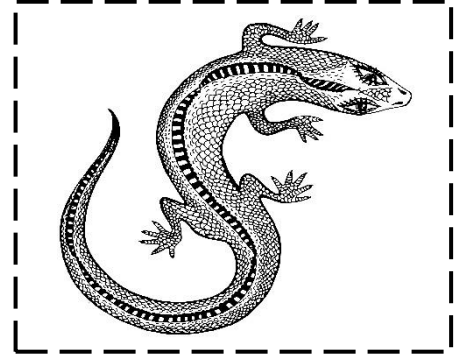
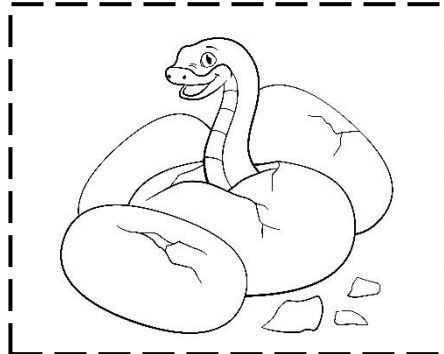
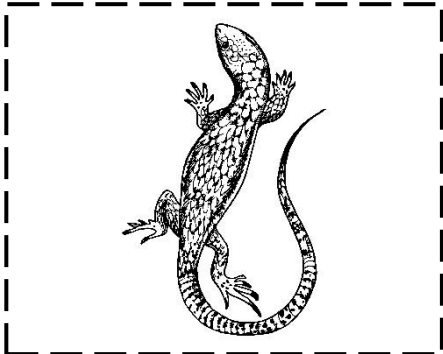
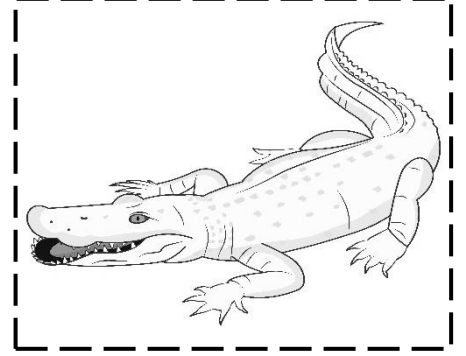
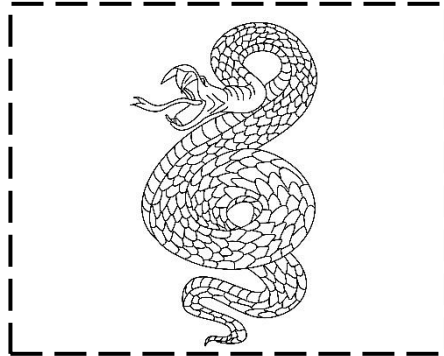
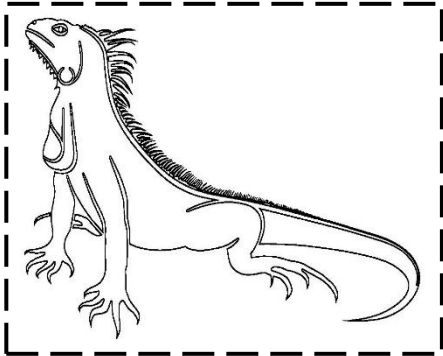


Do some reptiles have scales? \_\_\_\_\_

Activity Ideas: (Same activities as color images with line drawings)

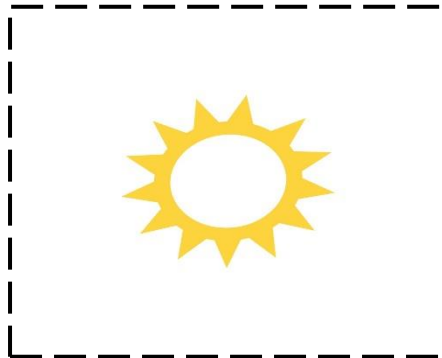
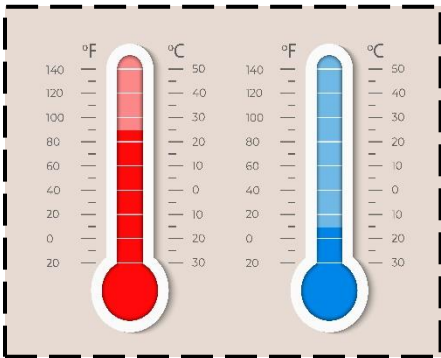
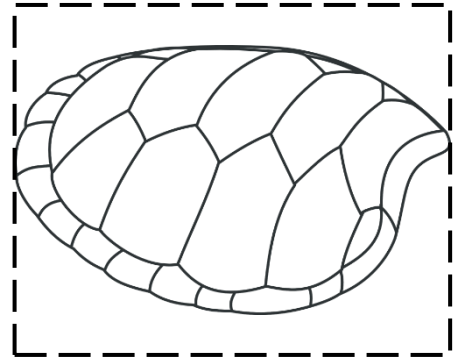
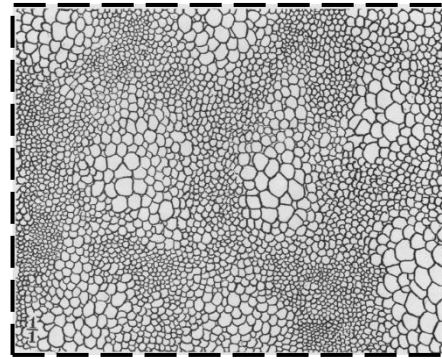
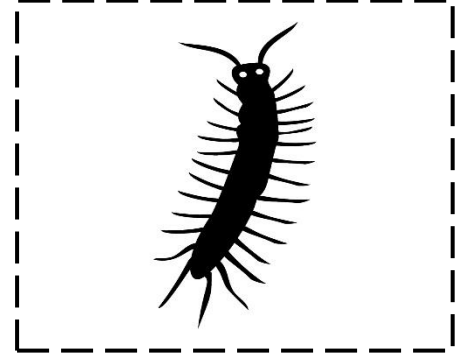
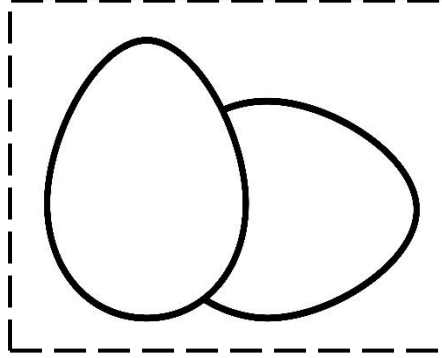
1. **Reading Engagement Activity:** Print one set of cards for each student. Do not cut out the pictures. Project the Teacher eBook on the SmartBoard (only showing one page at a time). Have students put a game piece on the picture that matches the picture on the gameboard. To study, remove game markers and call out images to have the student put the marker on. “Put a penny on the bear.”, etc.
2. Print two sets of cards. Cut and then laminate (optional). Have students play a variety of card games.
  - Go fish
  - Spread out all cards face down. Have students flip cards over one at a time to find matching pairs. **To modify**, have one set already face up. The second deck is face down. Select a card from the face-down pile and match it to the face up card.
3. Use Activity Cards from two different books the students have covered. Create two piles; one for each book (use the cover of the book to establish the pile category). When the student draws a card, she puts it in the pile that goes with the book. For example, combine cards from mammals and reptiles to sort, or two completely unrelated books like Ancient Egypt and Arizona Symbols book. Make up a point system.
4. Color the activity cards.
5. Cut out the activity cards and glue them on a paper. Write the word that goes with the picture (ex: Dog) under the image.





## Activity Ideas:

1. **Reading Engagement Activity:** Print one set of cards for each student. Do not cut out the pictures. Project the Teacher eBook on the SmartBoard (only showing one page at a time). Have students put a game piece on the picture that matches the picture on the gameboard. To study, remove game markers and call out images to have the student put the game piece on. “Put a penny on the bear.”, etc.
2. Print two sets of cards. Cut and then laminate (optional). Have students play a variety of card games.
  - Go fish
  - Spread out all cards face down. Have students flip cards over one at a time to find matching pairs. **To modify**, have one set already face up. The second deck is face down. Select a card from the face-down pile and match it to the face up card.
3. Use Activity Cards from two different books the students have covered. Create two piles; one for each book (use the cover of the book to establish the pile category). When the student draws a card, she puts it in the pile that goes with the book. For example, combine cards from mammals and reptiles to sort, or two completely unrelated books like Ancient Egypt and Arizona Symbols book. Make up a point system.



Each card represents the main idea for a page in the book. Use these as conversation starters. Match each word with a page in book. Discuss the word as it relates to the info. on each page.

reptile

eggs

food

warm up

don't need  
help

scales

shells

cold  
blooded

animals