



Let's Chat

Puerto Rico Stray Dogs and Cats



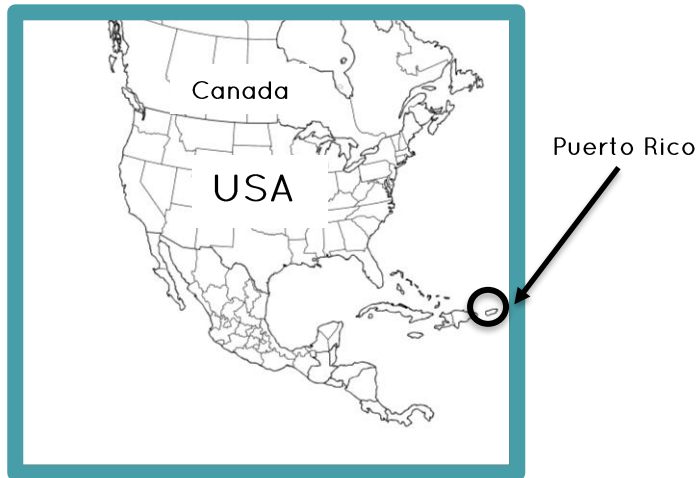
By Janet Giel-Romo, Ed.D.



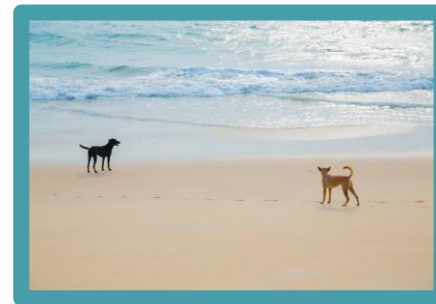
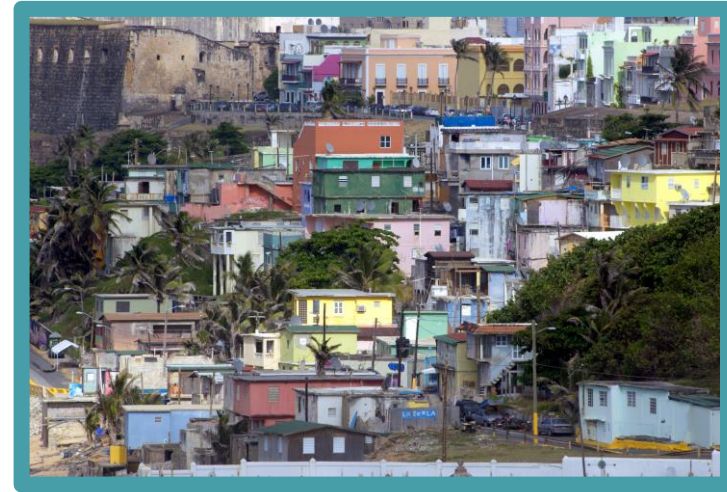
Copyright 2018 All Rights Reserved
Austin and Lily Solutions
Photo credit: Shutterstock license.
www.austinelily.com



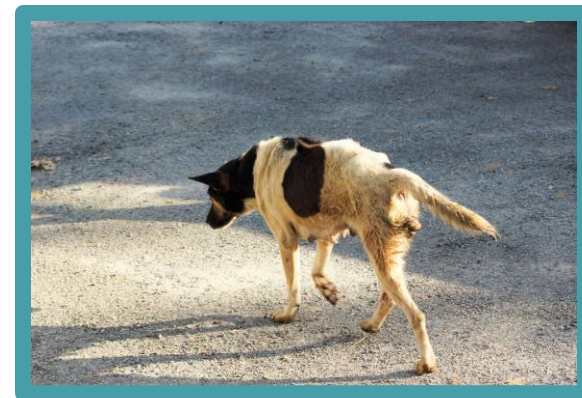
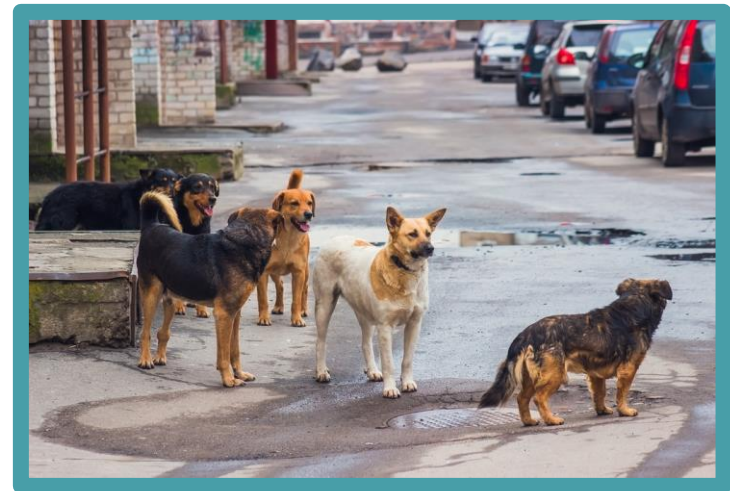
Everett Collection / Shutterstock.com



Selena Gomez was an actress in a Disney movie. It was called Witches of Waverly Place. It was filmed in Puerto Rico. When Selena was not working, she helped stray dogs and cats. What do you know about Puerto Rico?



Puerto Rico is an Island. San Juan is the capital. **Puerto Rico** has many beautiful beaches. What is an island? What is the capital of your country?

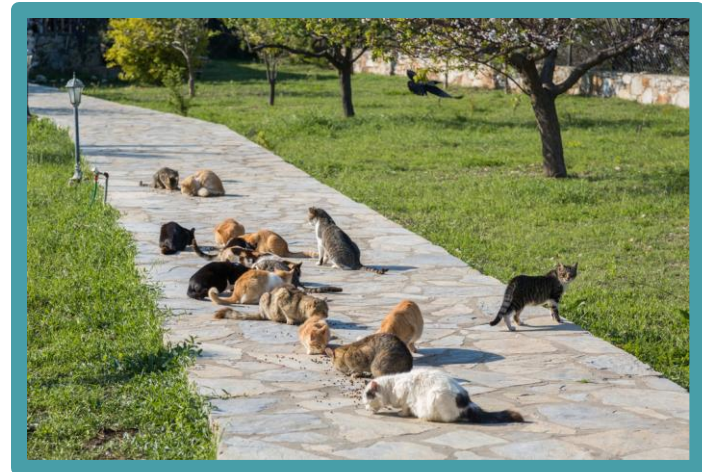
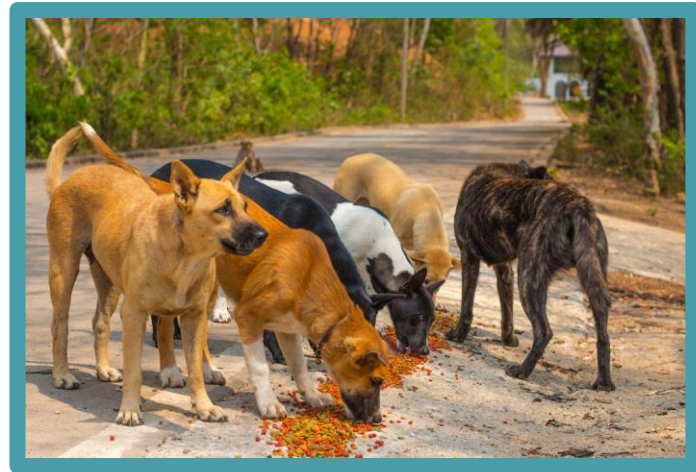


Many of the people in Puerto Rico are **poor**. Poor people do not have enough money. They can't afford to take care of pets. What does 'can't afford' mean? What is something you can't afford?

There are a lot of **stray dogs** in Puerto Rico. Stray dogs do not have a home. No one takes care of them. They do not belong to anyone. What do you think happens to stray dogs?



There are also a lot of **stray cats**. Stray cats do not have a home. What do you think happens to stray cats? What do stray cats eat?



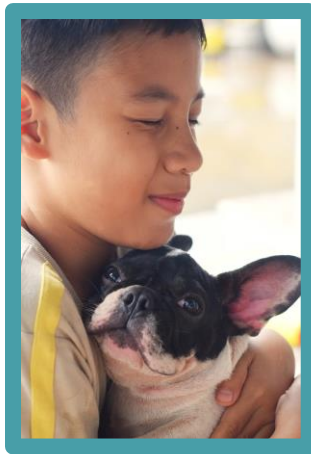
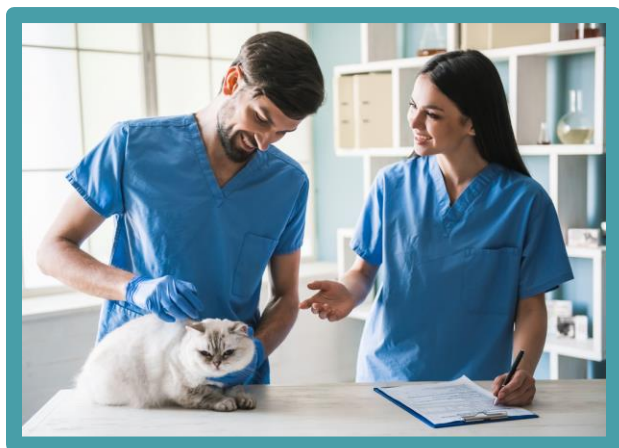
Selena helped the stray dogs and cats in Puerto Rico. She **fed** them. What do dogs and cats like to eat? Why do you think Selena fed the stray animals?



Selena and her friends cleaned the **puppies** they found. They sent them to an animal shelter in the U.S. to be adopted. How can the shelter find homes for the puppies?



There was one dog that followed Selena all around Puerto Rico. Selena loved that dog. She decided to adopt him. She named him **Chazz**.



Selena still helps stray dogs and cats in Puerto Rico. She helps an organization called **Island Dogs**. They pay for medical help for cats and dogs. They also help them find homes. How could you help?



Copyright 2018 All Rights Reserved
Austin and Lily Solutions
www.austinLily.com